

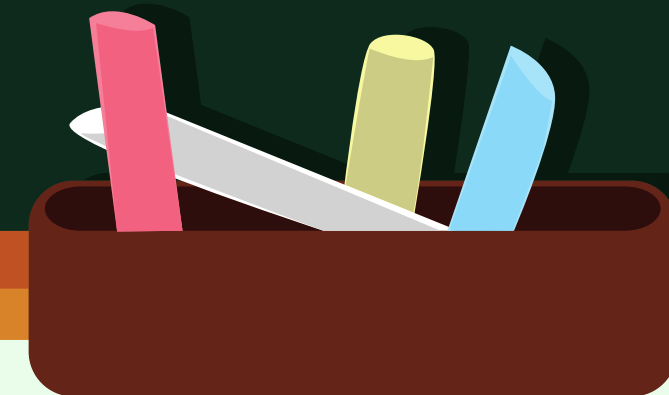


**MS. BOOHER'S  
OPEN HOUSE  
2022-2023**

# PLEASE KNOW

---

I will email this presentation and post it on my webpage for future reference



# COMMUNICATION

Group emails  
with the Boo  
Crew  
News(letter)

Remind App

Emails with  
questions or  
concerns

Hawks Rise  
Website

Hawks Rise  
ListServ

Student  
binder

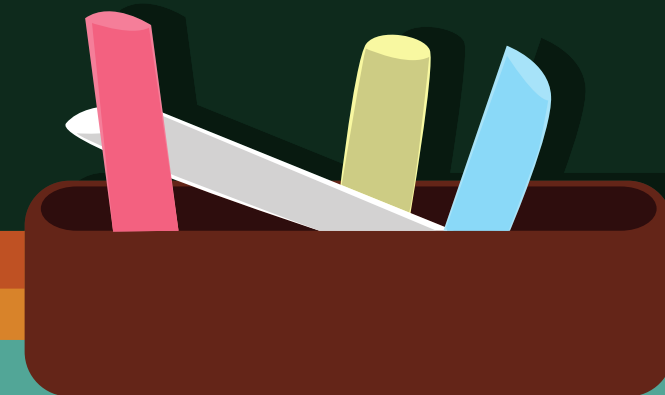
A large, irregular teal shape is centered on a light green background. The teal shape contains text. Surrounding the teal shape are various tropical plant illustrations: a green vine with a loop in the top left, a large green monstera leaf in the top right, a smaller green monstera leaf in the bottom left, and a green vine with a loop in the bottom right.

# TEACHER WEBPAGE

<https://www.leonschools.net/domain/6254>

The easiest way to find the webpage is by  
Googling "Ms. Booher Hawks Rise Elementary"

# ELA INFO



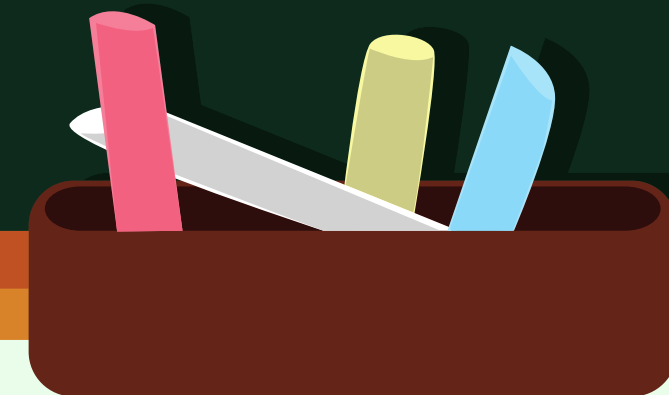
# STANDARD PUPIL PROGRESSION

---

This year we are using the new curriculum from Savvas called MyView Florida. You can access it digitally on your students Classlink page. It says "Savvas Realize"

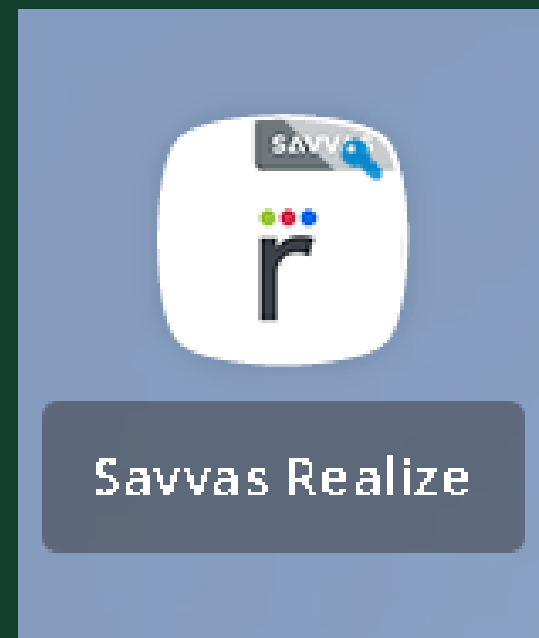
We are still waiting for some of the curriculum to arrive (massive orders district-wide take time)

This curriculum addresses the Florida BEST standards

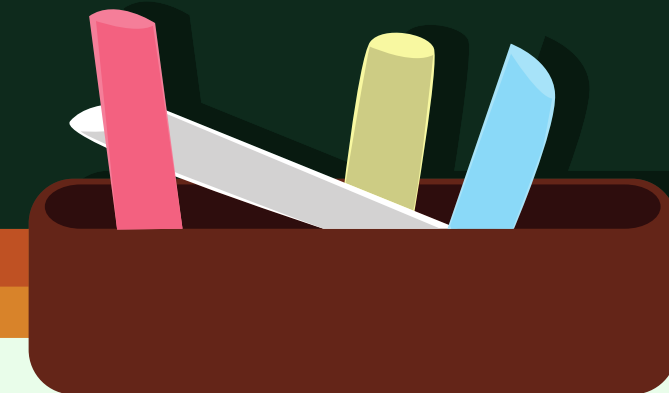


# STANDARD PUPIL PROGRESSION CONT.

---



This is what the icon looks like!

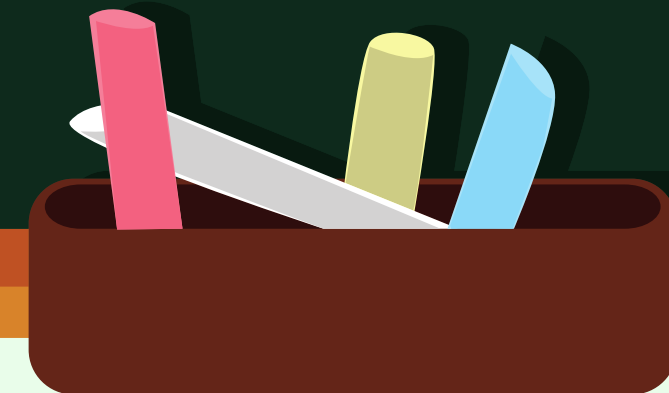


# ACCESS POINTS

---

Our students on Access Points alternate standards are using the district provided "Unique" ELA curriculum from n2y.

We focus heavily on repeated readings of passages and looking back to find answers to comprehension questions.

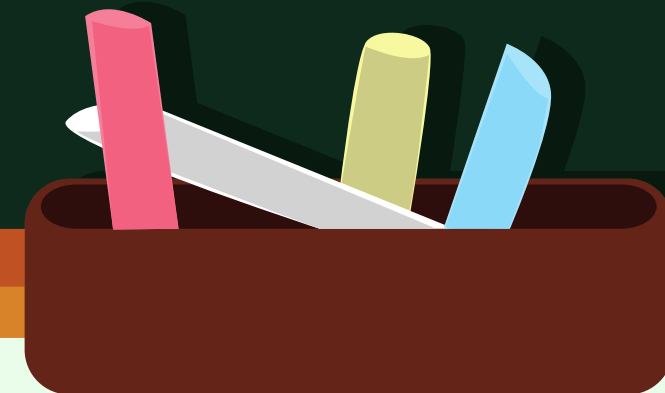




# ACCESS POINTS CONT.

---

I also utilize adapted books that tend to target our social studies and science topics to allow for further understanding and adaptations to those subjects.



# DAILY INTERVENTIONS AND PROGRESS MONITORING



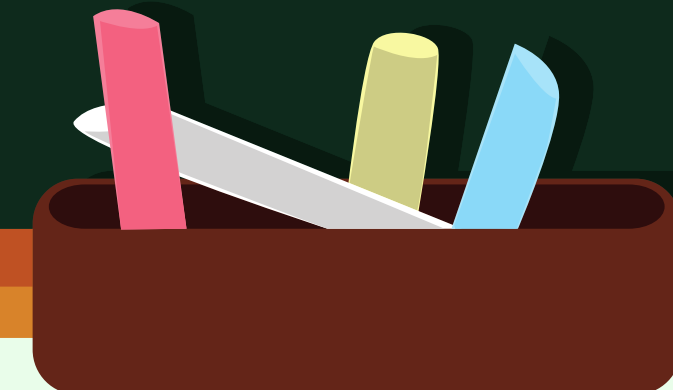
iReady  
Student/Teacher  
(D...



Learning Ally



myLexia  
(Teacher)



# TESTING



F.A.S.T. - Florida Assessment of Student Thinking

# ELA GRADING

---

3rd grade:

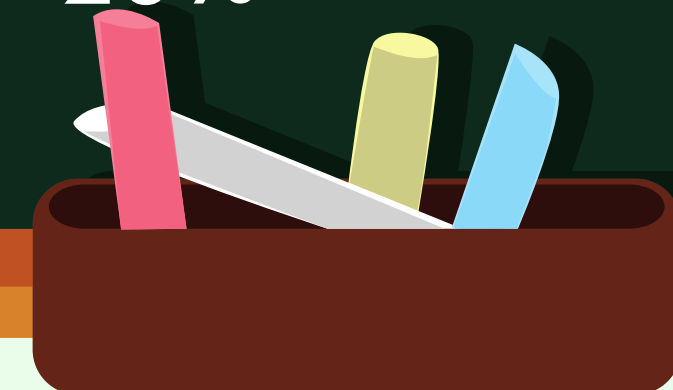
Tests: 50%  
Quizzes: 30%  
Classwork/HW:  
20%

4th grade:

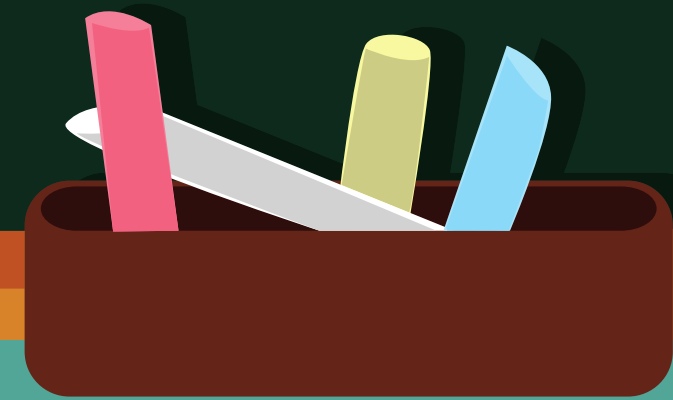
Tests: 70%  
Quizzes: 20%  
Classwork/HW:  
10%

5th grade:

Tests: 50%  
Quizzes: 30%  
Classwork/HW:  
20%



# MATH INFO



# STANDARD PUPIL PROGRESSION



We are continuing our use of Go Math FL (Think Central on Classlink)

We have made slight adjustments to account for the changes from Florida Standards to FL BEST Standards

We have 2 quizzes per chapter (mid chapter checkpoint and chapter review) and 1 chapter test

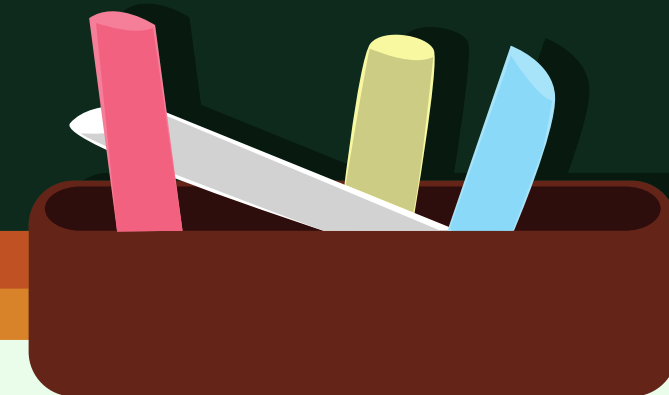
Math resource videos for 4th and 5th can be found on my class webpage - I am still working on locating 3rd grade :)

# ACCESS POINTS

---

Our students on Access Points alternate standards are using the district provided "Unique" math curriculum from n2y.

This curriculum is repetitive so I also bring in some other resources from varying grade levels so we can address more skills.





# TESTING



F.A.S.T. - Florida Assessment of Student Thinking



# MATH GRADING

---

3rd grade:

Tests: 50%

Quizzes: 30%

Classwork/HW:

20%

4th grade:

Tests: 60%

Quizzes: 30%

Classwork/HW:

10%

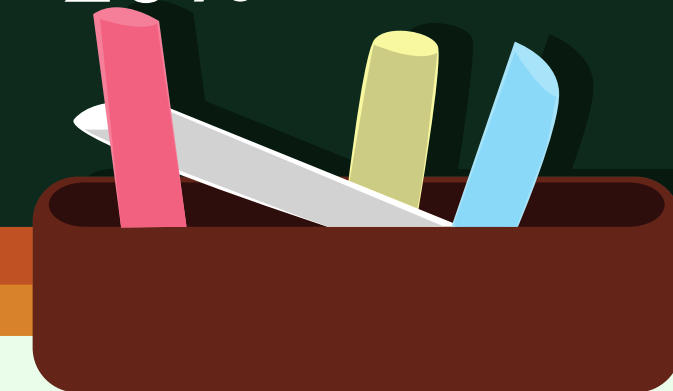
5th grade:

Tests: 50%

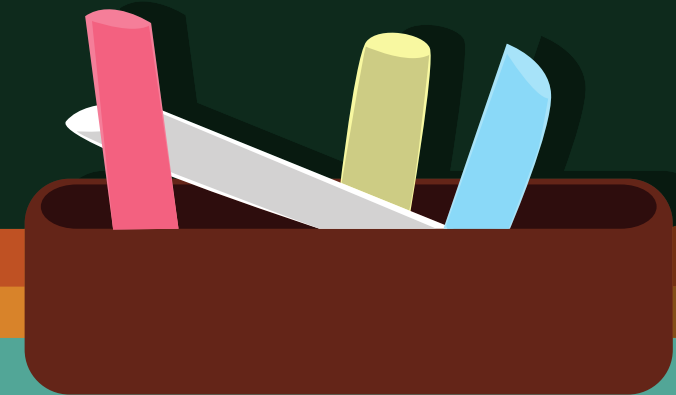
Quizzes: 30%

Classwork/HW:

20%



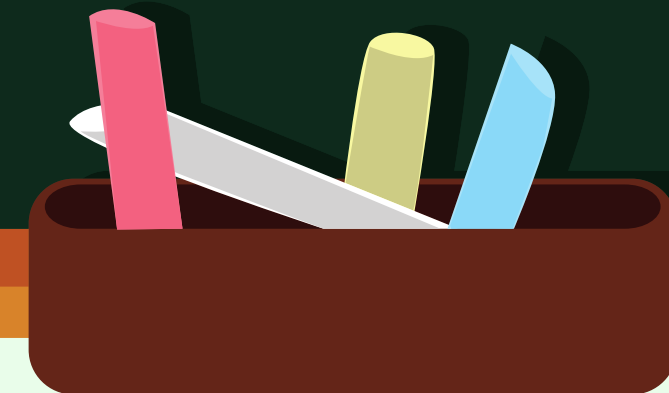
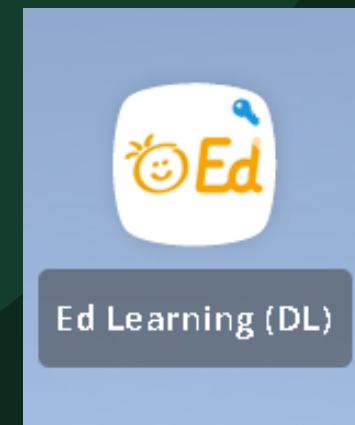
# SCIENCE INFO



# SCIENCE CURRICULUM

We utilize HMH Florida Science as our curriculum (Ed on classlink) and we will learn about topics such as:

- Studying science
- The engineering process
- Earth's place in space
- Minerals and resources,
- etc.



# TESTING

- 5th grade only
- **NOT ONLINE THIS YEAR**
- Taken at the end of the year, not through progress monitoring

# SCIENCE GRADING

## \*\*\*UPDATED\*\*\*

---

3rd grade:

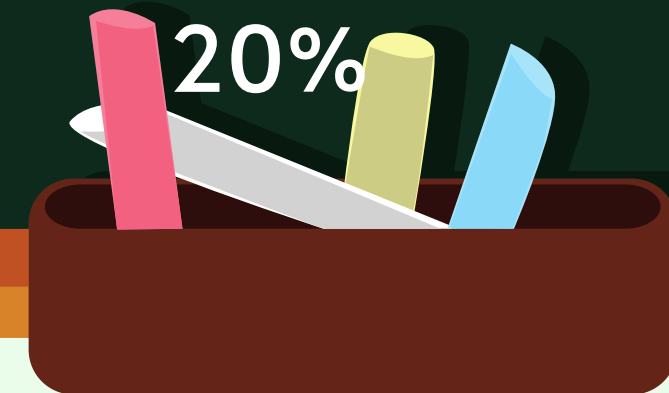
Tests: 50%  
Quizzes: 30%  
Classwork/HW:  
20%

4th grade:

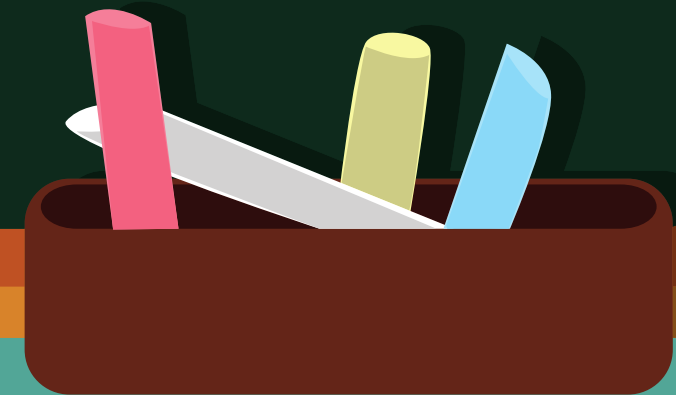
Tests: 60%  
Quizzes: 30%  
Classwork/HW:  
10%

5th grade:

Tests: 50%  
Quizzes: 30%  
Classwork/HW:  
20%



# SOCIAL STUDIES INFO



The background features a light green wall with a large, dark green chalkboard-like area framed in orange. To the left is a potted plant with green leaves. To the right is a brown pencil holder containing pink, yellow, and blue markers. A large green leaf is visible in the top right corner.

# **SOCIAL STUDIES CURRICULUM**

---

We use an online and print version of "Florida Studies Weekly" to address our social studies standards.

Every week we will discuss new topics through a "newspaper" and learn about Florida history.



# GRADING \*\*\* UPDATED \*\*\*

---

3rd grade:

Tests: 50%

Quizzes: 30%

Classwork/HW:

20%

4th grade:

Tests: 60%

Quizzes: 30%

Classwork/HW:

10%

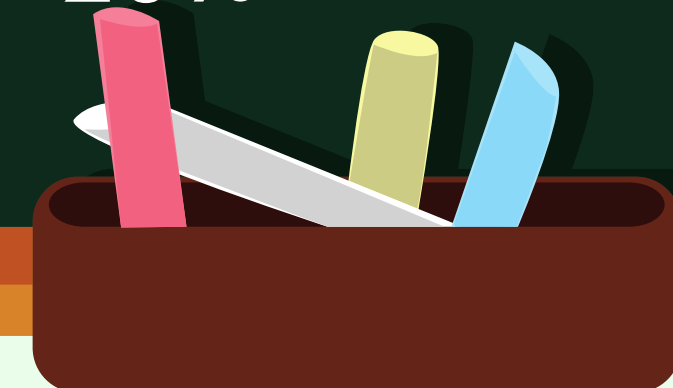
5th grade:

Tests: 50%

Quizzes: 30%

Classwork/HW:

20%





# WAY OF WORK



# WAY OF WORK

- IEP meetings are encouraged to be held in person but Teams is still an option
- Behavior notes in binders are updated daily barring any complications during dismissal when I fill them out
- Unfinished work in the front pocket of your student's binder should be completed as homework
- The best way to contact me is through email or the Remind app
- Paraprofessionals are not the point of contact about behaviors – please come to me with concerns





# PARENT PORTAL/FOCUS

Need your username and password?

Call District HELP DESK at 487-7524

or email at

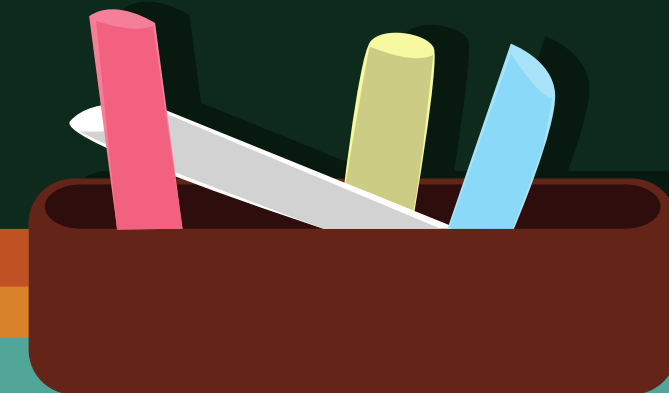
[FOCUShelp@leonschools.net](mailto:FOCUShelp@leonschools.net)

# CLASSLINK LOGIN

Student login at home:

9-DigitStudentID#@edu.leonschools.net

Password: 5digitLunch#



# FIELD TRIPS

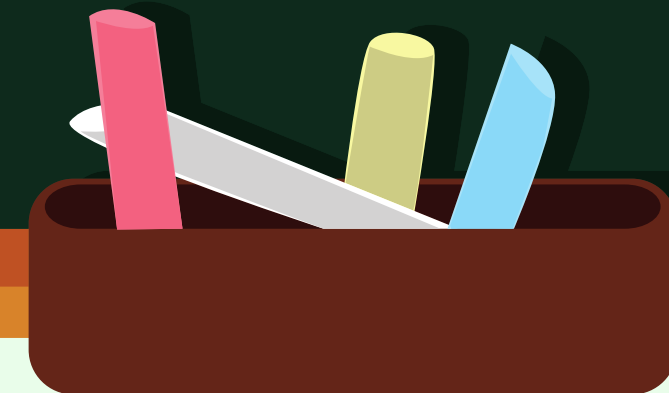
---

3rd grade: Joe Budd in November (date TBA)

4th grade: St. Augustine February 16th

5th grade: Sea World (date TBA)

If you would like to chaperone, you **MUST** complete a volunteer application every year.



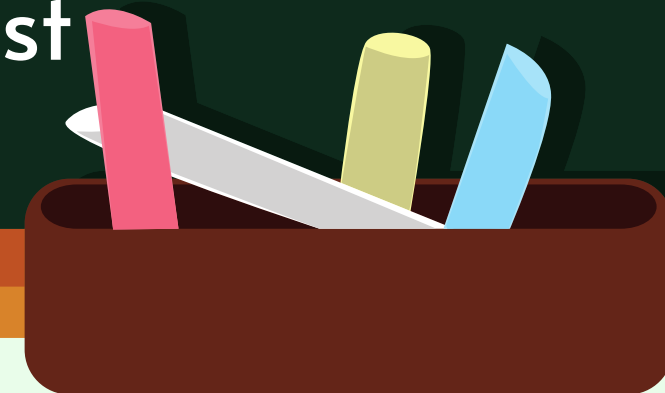
# EXTRA INFO



# THINGS TO DO AT HOME

---

- AR tests (yes you can take them at home!)
- Math fact fluency practice
- Check binder daily for any homework/unfinished work
- Increase expectations for independence at home
- Look at the FAST website and practice test







Q&A